

Adding a video to You Tube



BVSC
Bexley Voluntary Service Council
Strengthening voluntary and community action



**IMPACT IN
ACTION**



Impact In Action:
one of BVSC's
projects funded by
the City of London
Corporations' charity,
City Bridge Trust



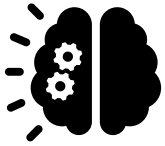


Benefit from FREE support until July 2022



1-2-1 targeted support

One-off, or a more ongoing mentoring approach, this support is tailored to the problems you want to solve so can pinpoint solutions quickly.



Training

Bite size training. Keep an eye on www.bvsc.co.uk under the Impact in Action section or request in house training.



Resources

Our website will be brimming over with resources that we've researched so that you don't have to. We've made a start, but keep returning as we add more.



Quality Assurance scheme.

A FREE quality assurance scheme to help your group meet best practice and legal requirements.



Why add a video to You Tube?

- 💡 To share the impact that you have made
- 💡 To reach people who might not want to read lots of information
- 💡 To make what you say stand out
- 💡 As part of your project work, eg if you are a wellbeing group you might want to share a wellbeing video



What we are covering today, but there are other options

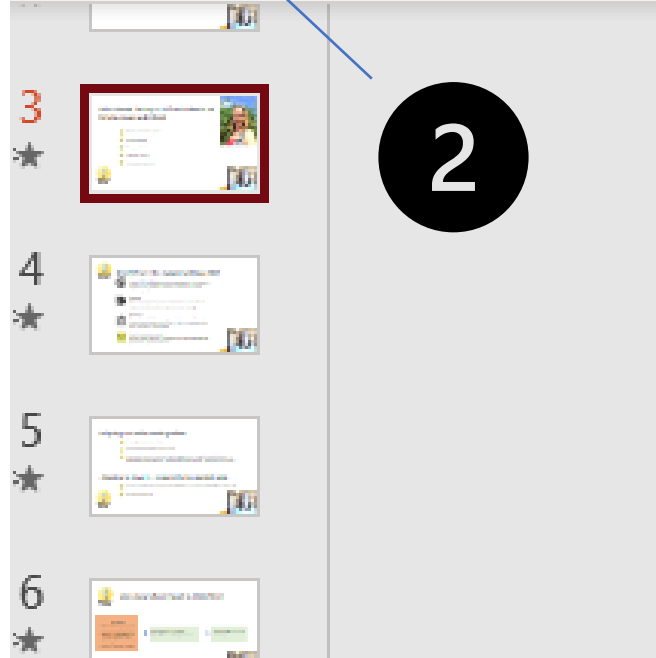
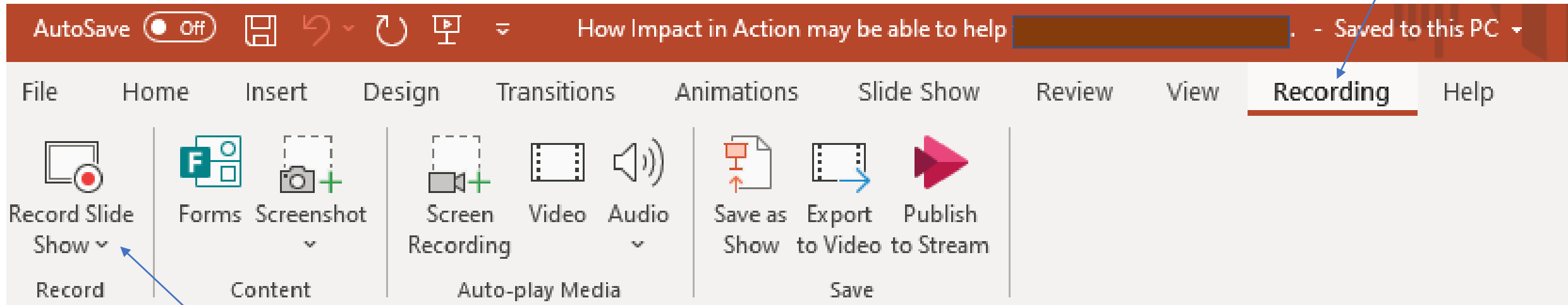
- 💡 Power point

- 💡 Canva

- 💡 Loom



Creating your video: Power Point



to help groups understand

- Outputs, outcomes, impact
- Evidencing need
- Dealing with data
- Theory of Change

Creating your video

1

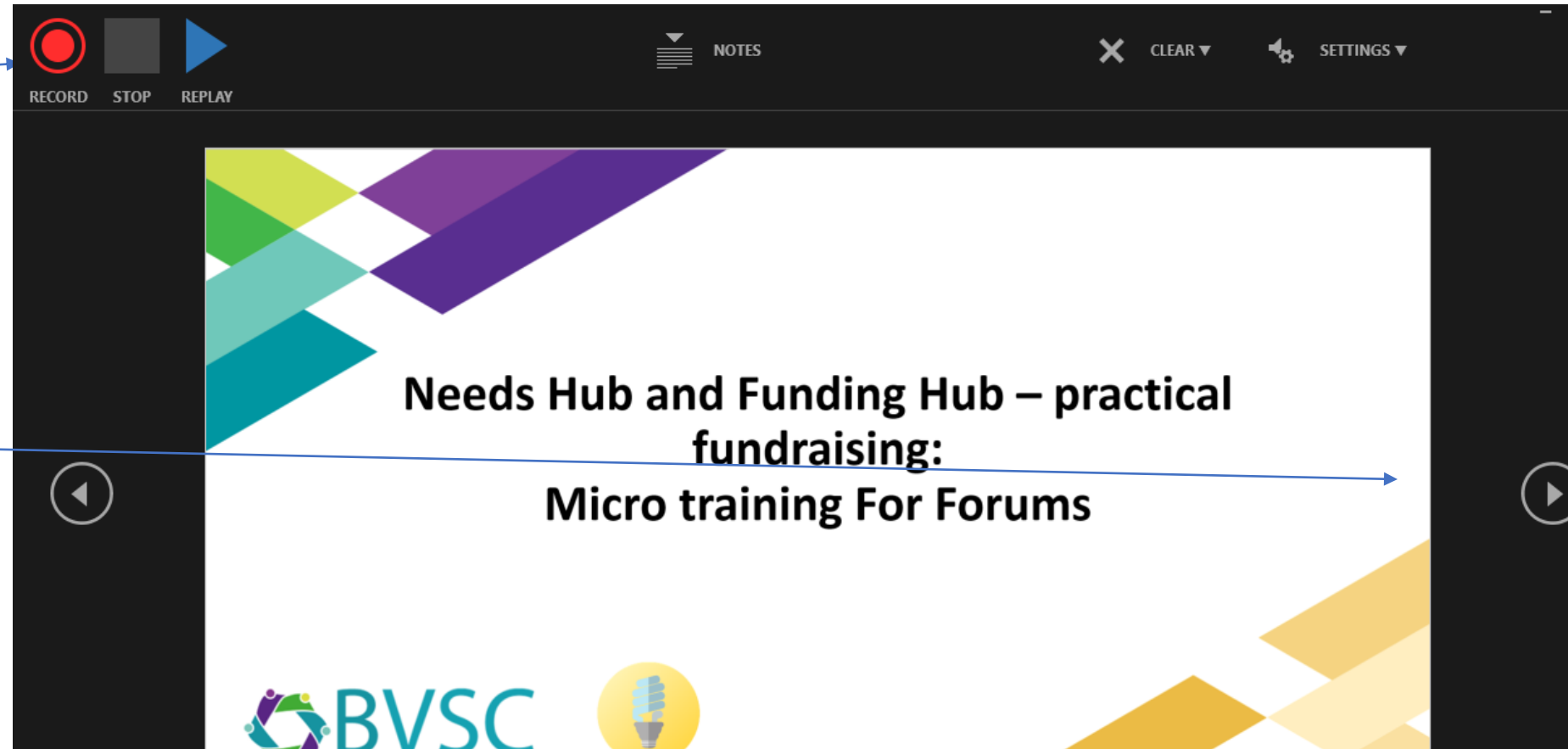
Choose record from beginning and then this screen will come up

2

When you are ready click here and it will record.

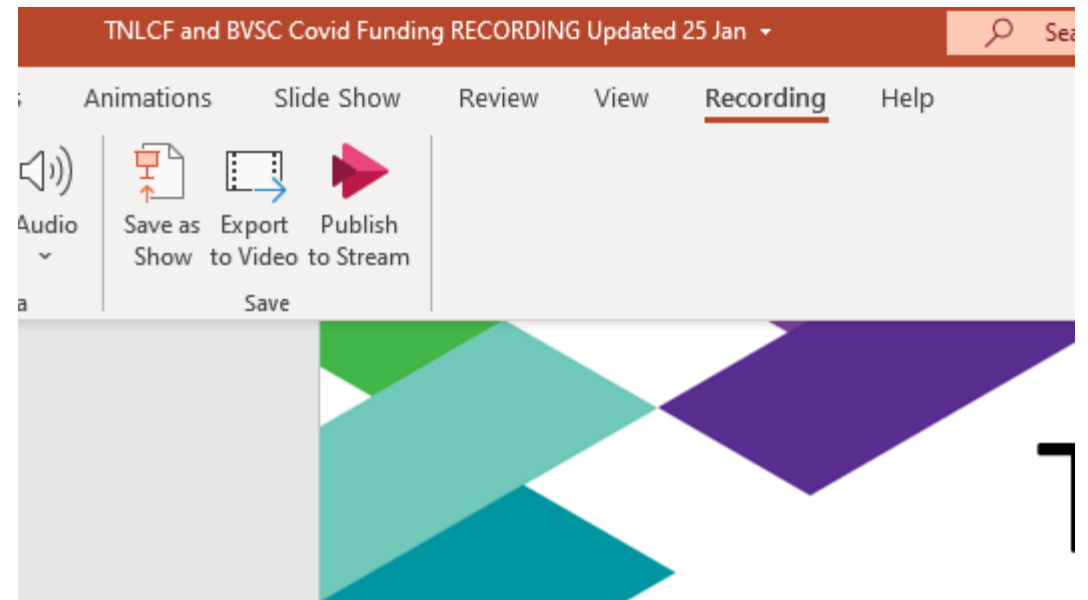
3

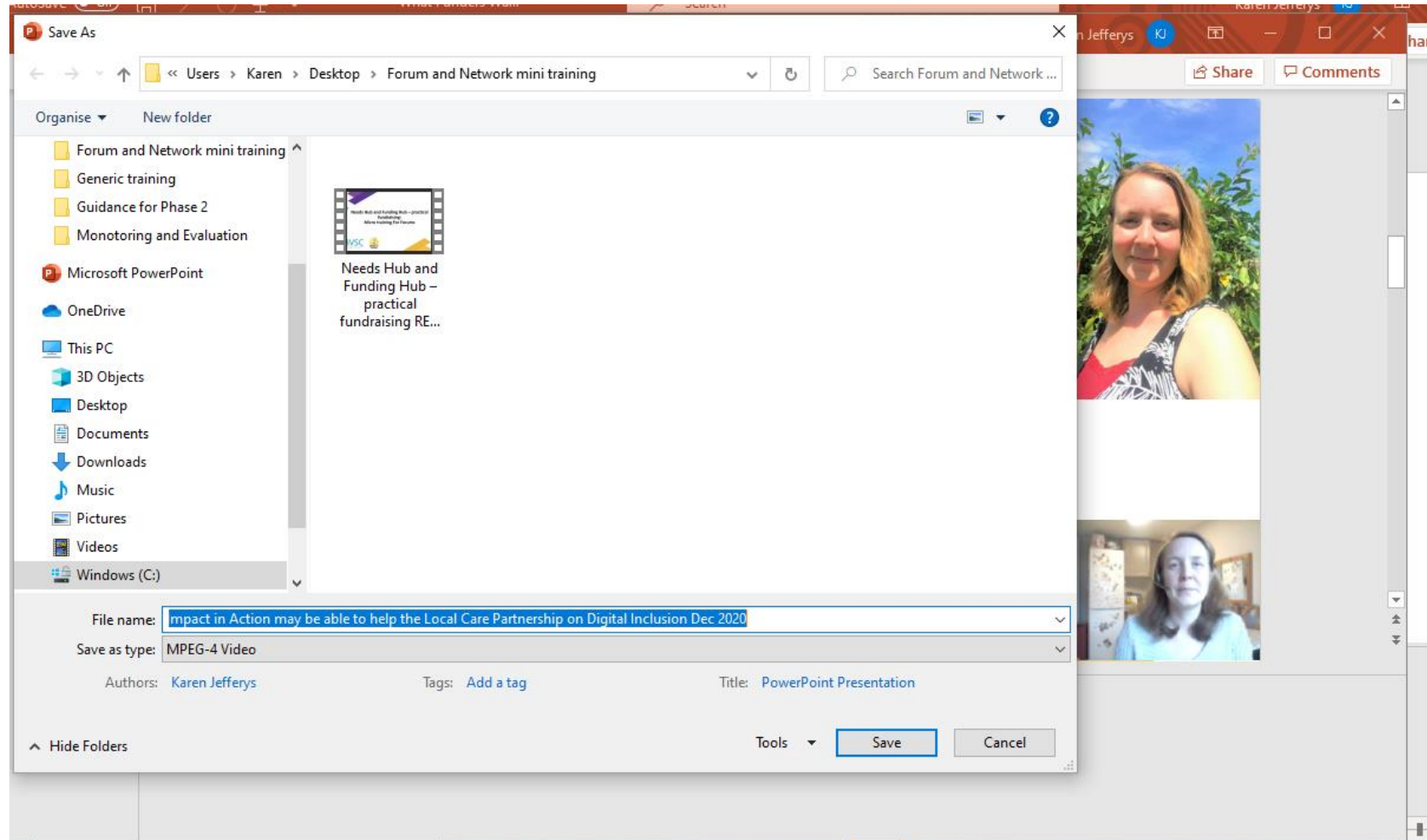
To go to the next slide click here.



Export what you have made to a video

- 💡 Recording, export to video
- 💡 You can decide on the quality







Then.....

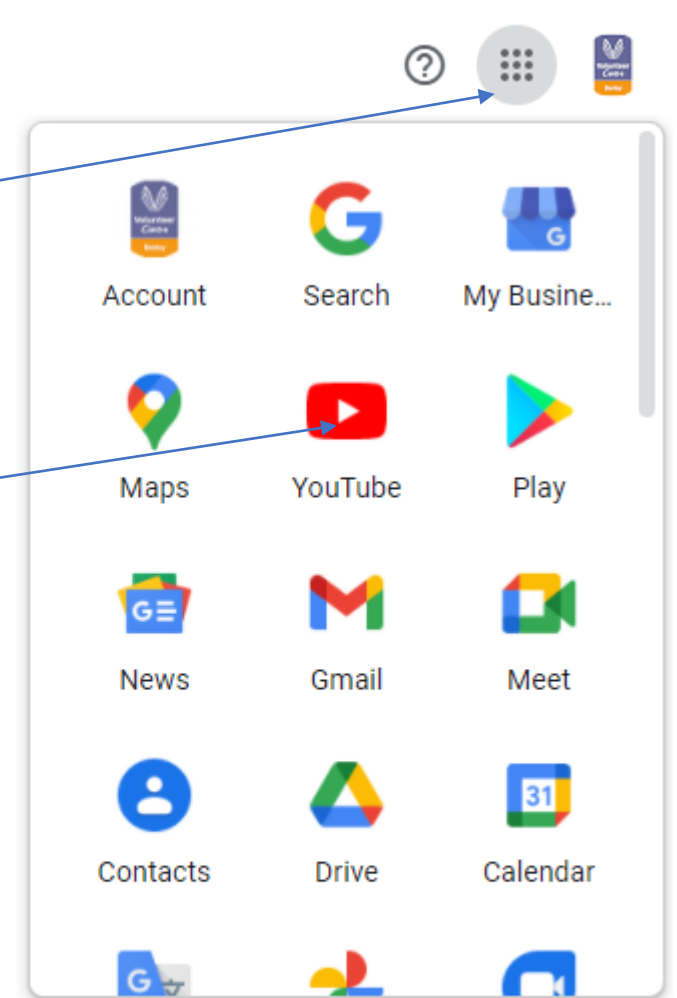
wait!

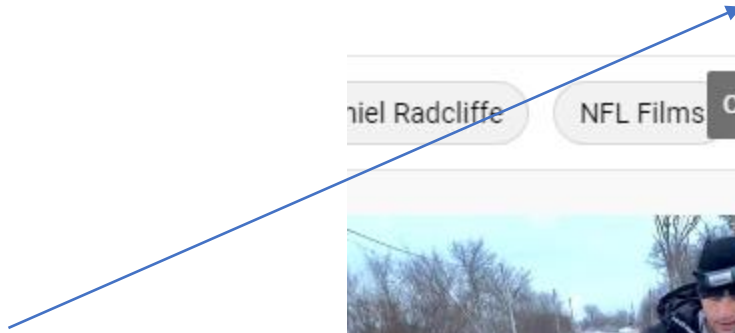


Opening up You Tube- You will need a Google Account

1

2







Add video

Search across your channel

Upload videos



Drag and drop video files to upload

Your videos will be private until you publish them.

SELECT FILES

By submitting your videos to YouTube, you acknowledge that you agree to YouTube's [Terms of Service](#) and [Community Guidelines](#).

Please be sure not to violate others' copyright or privacy rights. [Learn more](#)



Add video

Add in your details
and description

How Impact in Action may be able to help the Local Care Partnership on D...

Saved as draft



Details

Video elements

Visibility

Details

Title (required)

How Impact in Action may be able to help the Local Care Partnership on Digital Inclusion Dec 2020

Description ?

For 22nd Dec 2020

Processing video...

Video link

<https://youtu.be/jZhGYRsXTWk>



Filename

How Impact in Action may be able to he...



Upload complete ... Processing will begin shortly

NEXT



Add video

Details

Video elements

Visibility



Visibility

Choose when to publish and who can see your video

☒ Save or publish

Make your video **public**, **unlisted**, or **private**

☐ Private

Only you and people you choose can watch your video

☐ Unlisted

Anyone with the video link can watch your video

☐ Public

Everyone can watch your video

☐ Set as instant Premiere

Processing video...

How Impact in Action may be able to help the
Local Care Partnership on Digital Inclusion Dec
2020

Video link



Think carefully about
who you want to see
what



It will give you a link to share

This, and other training and resources can be found at: <https://bvsc.co.uk/impact-resources>

karen@bvsc.co.uk

