

BEXLEY  EAF CENTRE

WORKING WITH DEAF PEOPLE FOR EQUALITY

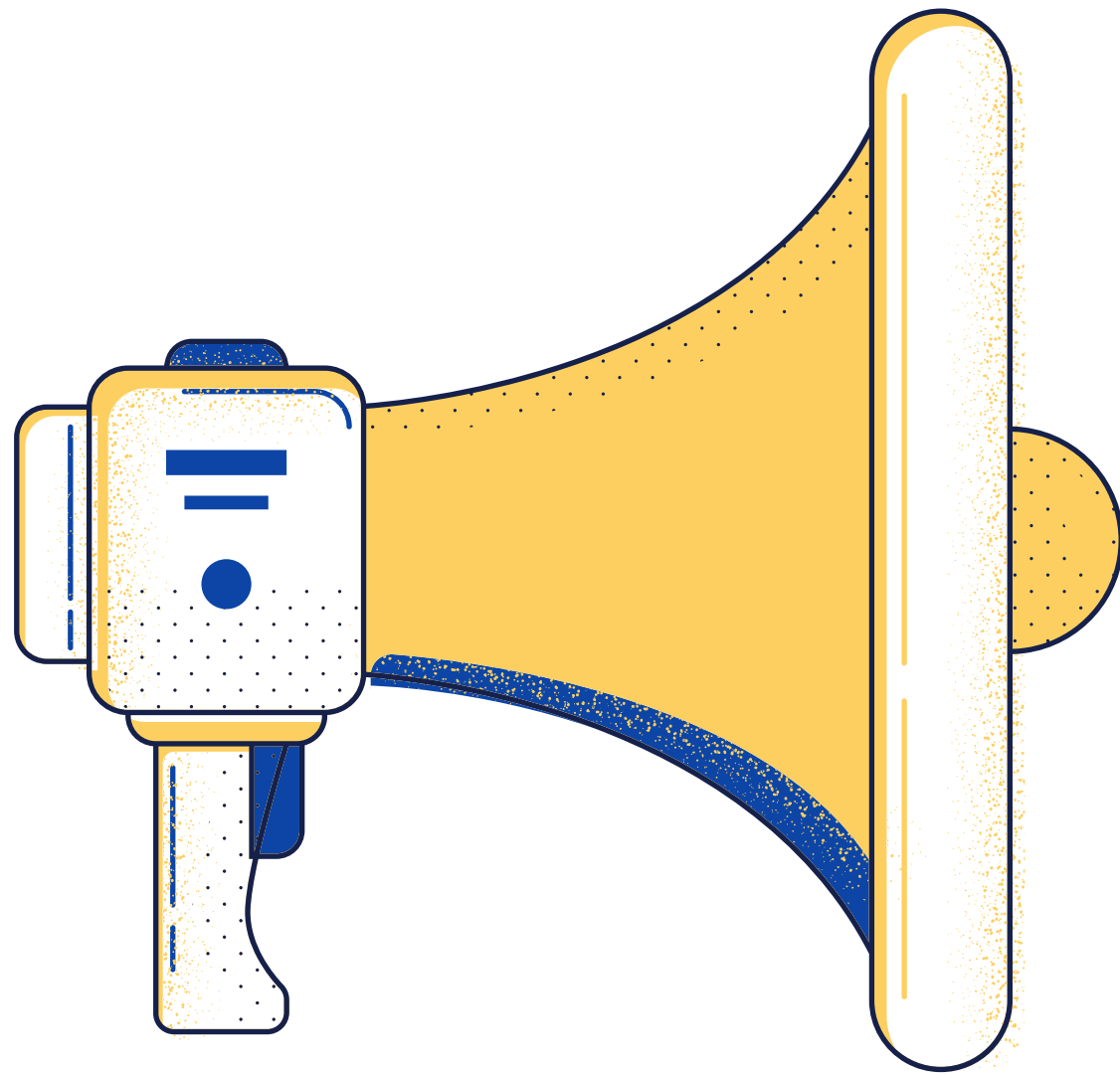
Deaf Job Club Online



BVSC

Bexley Voluntary Service Council
Strengthening voluntary and community action





BRITISH SIGN LANGUAGE (BSL)

Sign Language is a visual means of communicating using gestures, facial expression, and body language.

BSL has it's own grammatical structure and syntax, as a language it is not dependant nor is it strongly related to spoken English. In it's written format, BSL can look dis-jointed and even child-like to a hearing person.

BSL is the preferred language of over 150,000 people within the UK (2021 - [Signature.org.uk](https://signature.org.uk)).

ESTABLISHING NEED

Bexley Deaf Centre has been supporting local deaf people to find employment for the past 19 years. However, when social distancing restrictions were introduced we were no longer able to support our service users face to face.

To make matters worse, deaf people were disproportionately effected as they tended to be employed in jobs such as retail, cleaning, kitchen staff etc.

Discrimination towards deaf and disabled people still exists amongst some employers



WHAT DOES DEAF JOB CLUB OFFER?



CV review

Help developing a good quality
CV written in English

Interviews

Informing members of what to
expect during an interview
including techniques and
appearance etc

Educating Employers

Providing deaf awareness
training and information on
Access to Work

Job Applications

Help with understanding and
applying for jobs via on-line
application processes

Interpreters

Organising interpreters for an
interview

Tech Loan

The loan of laptops (via loan
agreement) for members who
do not have access to a
computer

Funding from The National Lottery Community Fund,
distributed by Bexley Voluntary Service Council (BVSC),
has helped us to: .

- Support 7 Deaf people to find employment
- Loan 4 laptops to our job club members
- Provide 208 hours of support
- Organise 13 interviews (10 with interpreters)
- Deliver 2 Deaf awareness sessions
- Provide assistance with 1 Access to Work application
- Help 1 deaf person to secure a job

Thanks to National Lottery players for making this
possible!





OUTCOMES

Members become more positive about finding employment when they feel they are supported through every stage of the process

Future employers become better informed about employing deaf and disabled people

Members become more financially independent and less reliant on benefits

Increased feeling of self-worth leading to better well-being and access to better life choices



Making a difference

DS - When I lost my job working for BT I didn't think I would stand a chance of getting another job at my age and being deaf but I am over the moon that Bexley Deaf Centre have helped me to find a job as a delivery driver!

BEXLEY DEAF CENTRE

WORKING WITH DEAF PEOPLE FOR EQUALITY

**British Sign Language courses
starting in February!**

**Bespoke Deaf Awareness courses
available for organisations**

www.bexleydeafcentre.com/info@bexleydeafcentre.co.uk